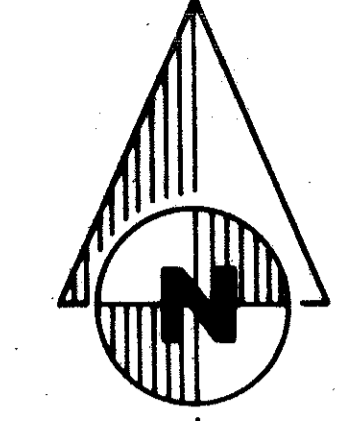


31/70

70

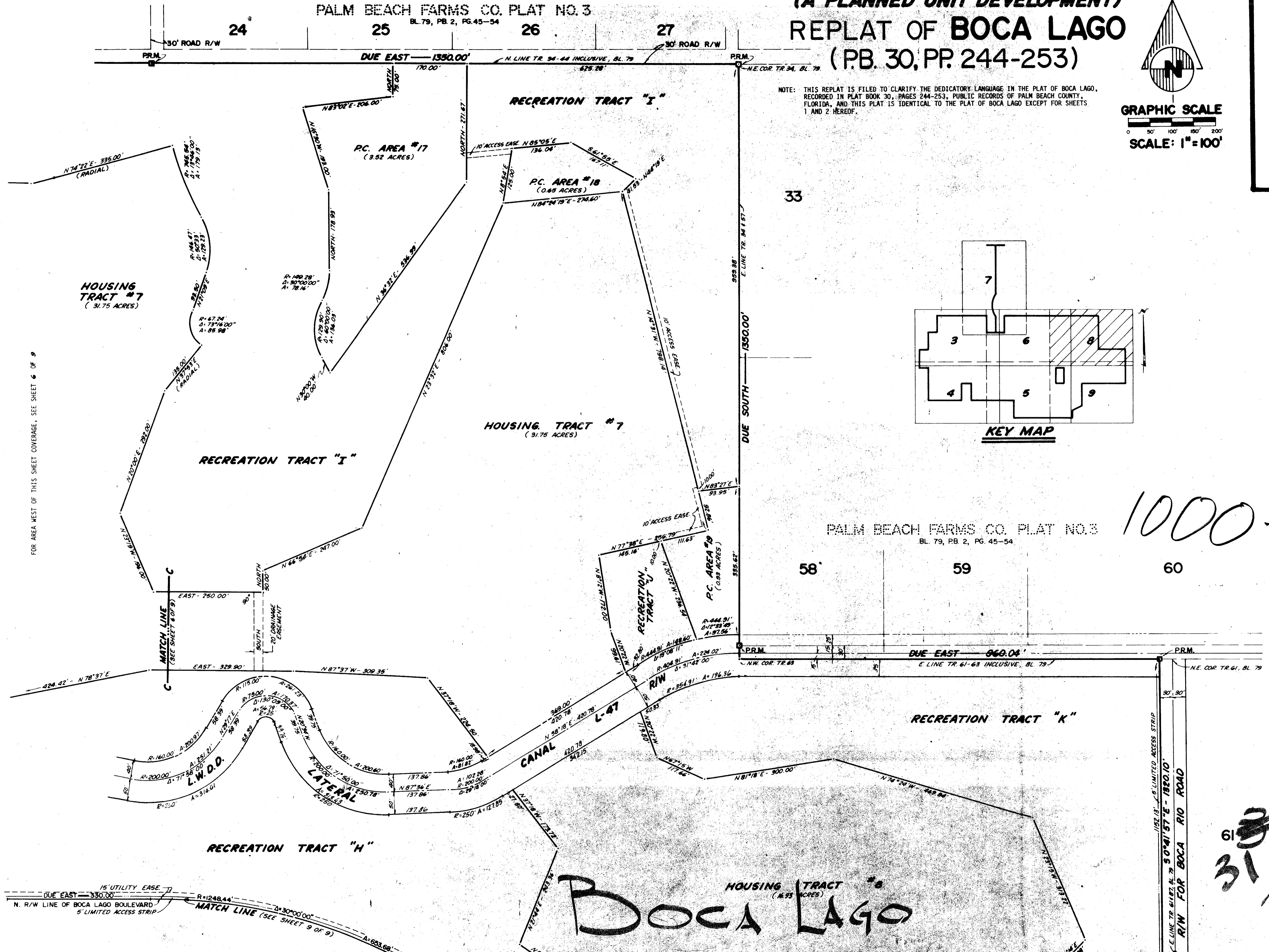
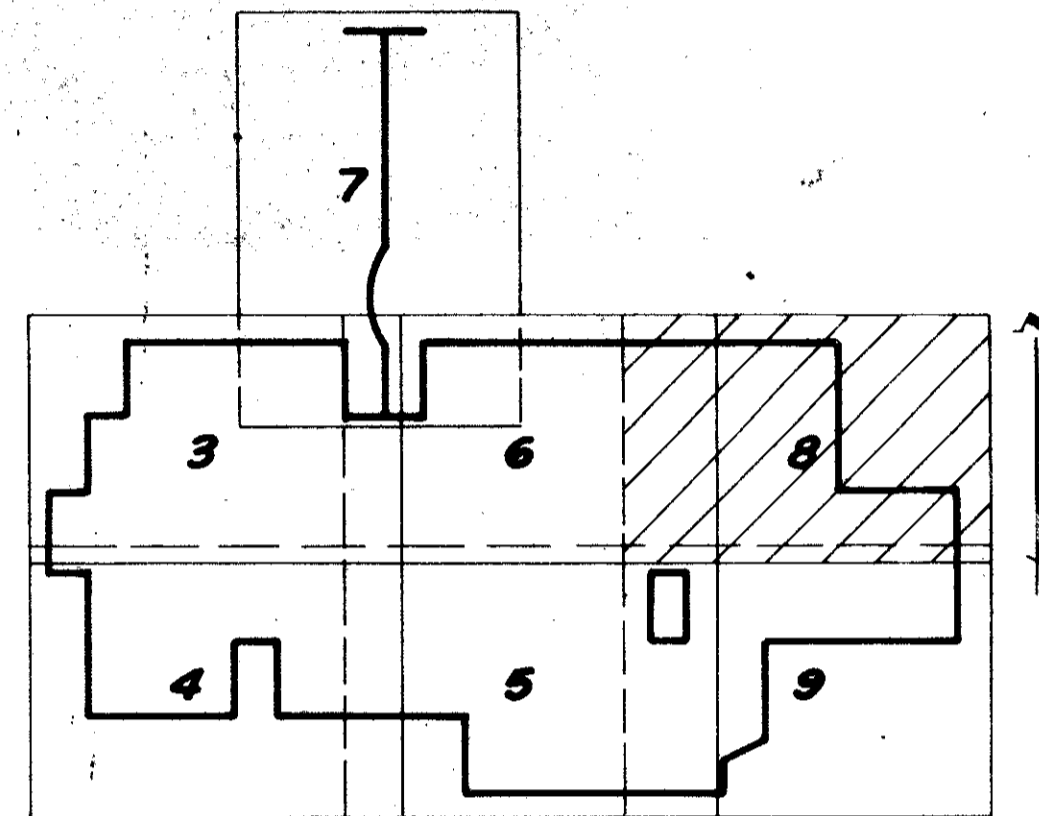
PALM BEACH FARMS CO. PLAT NO. 3
BL. 79, PB. 2, PG. 45-54

(A PLANNED UNIT DEVELOPMENT)
REPLAT OF BOCA LAGO
(P.B. 30, PP. 244-253)



GRAPHIC SCALE
0 50' 100' 150' 200'
SCALE: 1" = 100'

NOTE: THIS REPLAT IS FILED TO CLARIFY THE DEDICATORY LANGUAGE IN THE PLAT OF BOCA LAGO, RECORDED IN PLAT BOOK 30, PAGES 244-253, PUBLIC RECORDS OF PALM BEACH COUNTY, FLORIDA, AND THIS PLAT IS IDENTICAL TO THE PLAT OF BOCA LAGO EXCEPT FOR SHEETS 1 AND 2 HEREOF.



FOR AREA WEST OF THIS SHEET COVERAGE, SEE SHEET 6 OF 9

FOR AREA SOUTH OF THIS SHEET COVERAGE, SEE SHEET 9 OF 9

PALM BEACH FARMS CO. PLAT NO. 3
BL. 79, PB. 2, PG. 45-54

1000-201

This instrument was prepared by Robert R. Gane of Bailey-Fotopay, Inc., 1028 South Military Trail, West Palm Beach, Florida, 33411, for the firm of CONRAD W. SCHAEFER, Consulting Engineers, West Palm Beach, Florida.

61
31/70